

High performance 3-phase filter

FN 3359

- Rated voltages 520VAC and 690VAC
 - Low weight and compact packaging
 - HV types designed for IT power networks
 - NEW: protective covers as optional accessories
- Nennspannungen 520VAC und 690VAC
 - Geringes Gewicht und kompakte Abmessungen
 - HV Typen ausgelegt für IT-Netze
 - NEU: optional Abdeckhauben als Berührungsschutz erhältlich
- Tension nominale de 520VAC et 690VAC
 - Dimensions et poids réduits
 - Versions HV dimensionnées pour les réseaux IT
 - NOUVEAU: couvercle de protection disponible en option



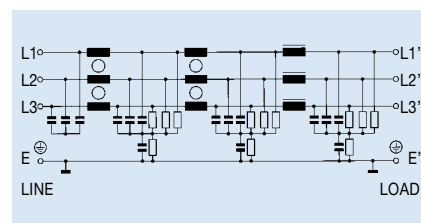
Technical specifications

Max. operating voltage:	Standard types 520VAC HV types 690VAC
Operating frequency:	DC to 60Hz at 50°C
Hipot test voltage:	P → E 2700VDC for 2s (factory test) P → P 2150VDC for 2s (factory test)
Overload:	4 times rated current at switch on, then 1.5 times rated current for 1 minute, once per hour
Temperature range:	-25°C to +100°C
Design corresponding to:	UL 1283, CSA 22.2 No. 8 1986, EN 133200

Approvals (filters up to 1000A)



Electrical schematic



Filter	Current rating at 50°C A	Leakage current [†] 500VAC/50Hz mA	Power loss W	Connections	Weight kg	Protective covers Order code
FN 3359-150-28	150	< 6	28	screws	6.5	1151-050
FN 3359HV-150-28	150	< 6	28	screws	6.5	1151-050
FN 3359-180-28	180	< 6	38	screws	6.5	1151-050
FN 3359HV-180-28	180	< 6	38	screws	6.5	1151-050
FN 3359-250-28	250	< 6	57	screws	7	1151-051
FN 3359HV-250-28	250	< 6	57	screws	7	1151-051
FN 3359-320-99	320	< 6	40	busbars	10.5	1151-052
FN 3359HV-320-99	320	< 6	40	busbars	10.5	1151-052
FN 3359-400-99	400	< 6	50	busbars	10.5	1151-052
FN 3359HV-400-99	400	< 6	50	busbars	10.5	1151-052
FN 3359-600-99	600	< 6	65	busbars	11	1151-053
FN 3359HV-600-99	600	< 6	65	busbars	11	1151-053
FN 3359-1000-99	1000	< 6	91	busbars	18	1151-054
FN 3359HV-1000-99	1000	< 6	91	busbars	18	1151-054
FN 3359-1600-99	1600	< 6	180	busbars	27	
FN 3359HV-1600-99	1600	< 6	180	busbars	27	
FN 3359-2500-99	2500	< 6	400	busbars	55	
FN 3359HV-2500-99	2500	< 6	400	busbars	55	

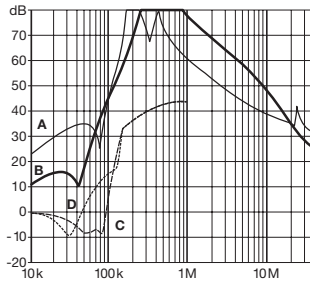
[†] Leakage under normal operating conditions.

Note: if two phases are interrupted, worst case leakage current could be much higher than the value shown.

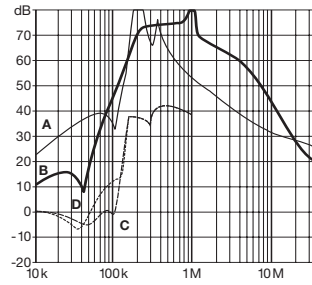
FN 3359 insertion loss

Per CISPR 17; A = 50Ω/50Ω sym; B = 50Ω/50Ω asym; C = 0.1Ω/100Ω sym; D = 100Ω/0.1Ω sym

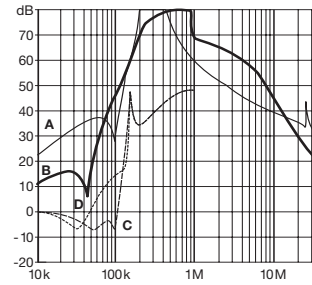
150A / 180A types



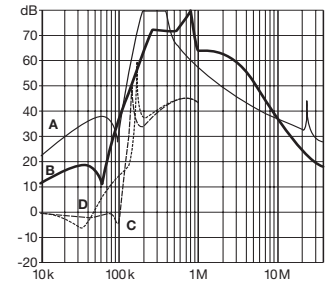
250A types



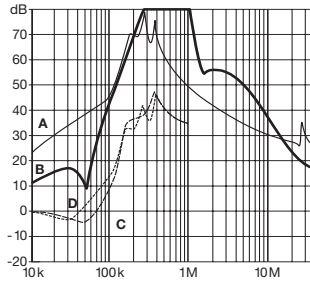
320A / 400A types



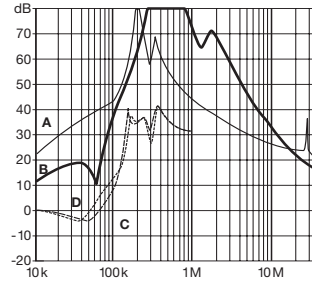
600A types



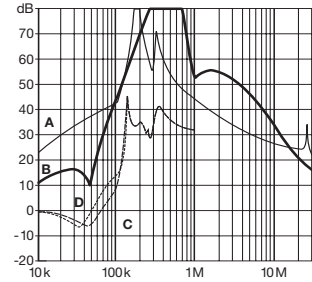
1000A types



1600A types

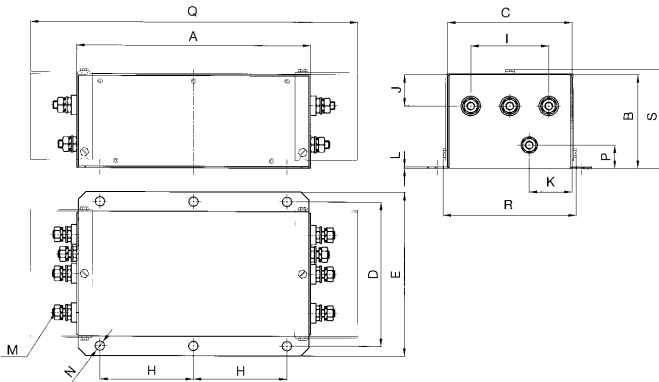


2500A types

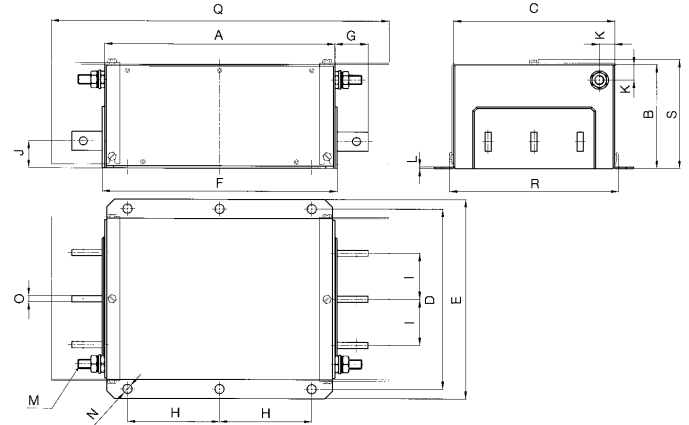


Mechanical data

150A to 250A types



320A to 2500A types



	150A/180A	250A	320A/400A	600A	1000A	1600A	2500A	Tol. mm
A	300				350	400	600	± 1.5
B	120	125	115	135		170	200	± 1.0
C	160	180	210		230	250	300	± 1.0
D	185	205	235		255	275	330	± 0.5
E	210	230	260		280	300	370	± 1.0
F			306		356	406	606	± 1.5
G			40		50	90	95	± 1.5
H	120				145	170	250	± 0.5
I	100	110	60				100	± 0.5
J	40		35		64		80	± 2.0
K	55	62.5	20					± 1.0
L	2				3			± 0.2
M	M10		M12			M16		-
N	12				14			± 0.2
O			6	8	10	15		± 0.1
P	30	35						± 1.0
Q	420		440		510			± 1.0
R	171	191	221		241			± 1.0
S	127	132	122	142	177			± 1.0

All dimensions in mm; 1 inch = 25.4 mm